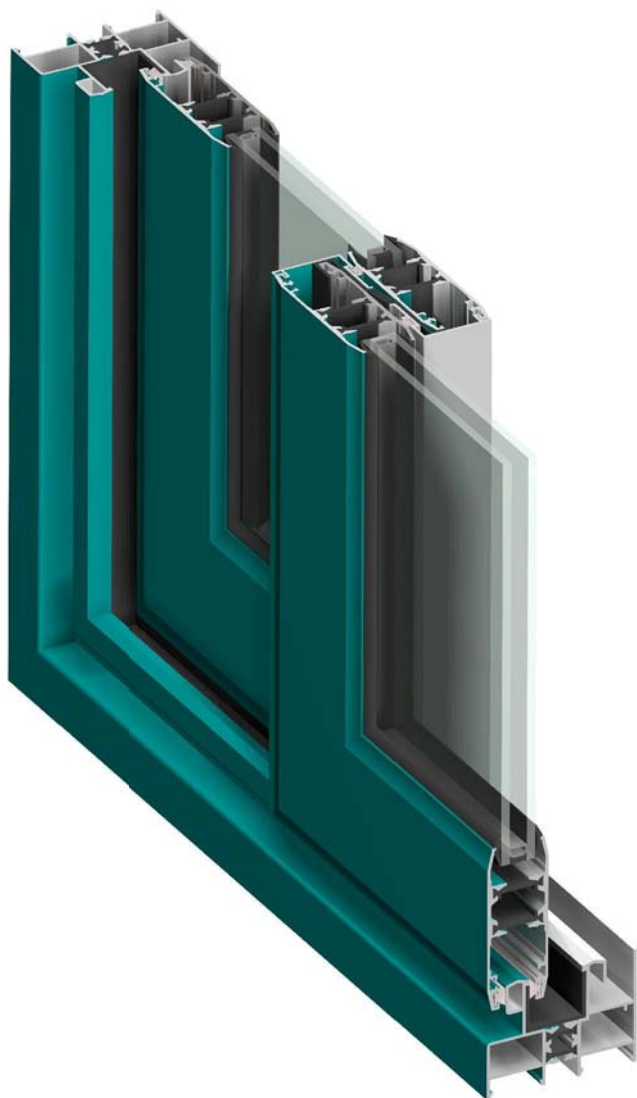


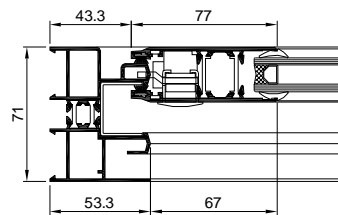
- Flexible
- Próximo
- Fiable
- Rentable

SERIE
C97R

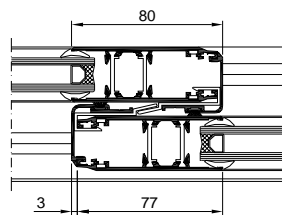




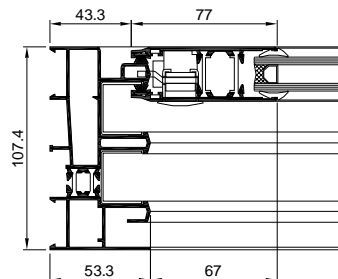
1 Marco Lateral



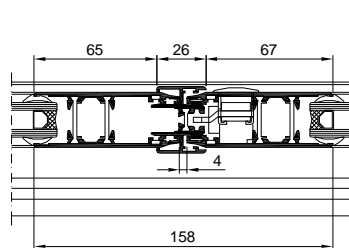
2 Nudo Central



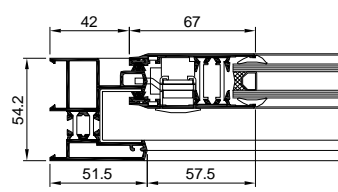
3 Marco Perimetral 3 Carriles



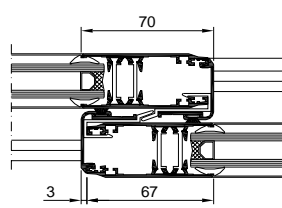
4 Cierre Central



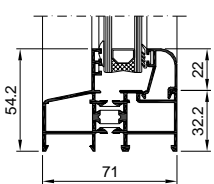
5 Marco Perimetral Hoja 67 mm.



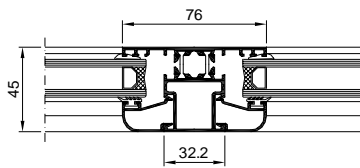
6 Nudo Central Hoja 67 mm.



7 Marco Fijo



8 Partelunas



Descripción

- Carpintería corredera perimetral con rotura de puente térmico.
- Marco de 71 mm. y hojas de 29 mm.
- Espesor medio en marcos y hojas de 1,4 mm.
- Juntas de estanqueidad mediante burletes.
- Hueco de acristalamiento entre 21 y 25 mm.
- Poliamida 6,6 con 25% de fibra de vidrio.

Ensayos Marcado CE

Medidas de ensayo: 1,23 x 1,48 m. = 1,82 m²

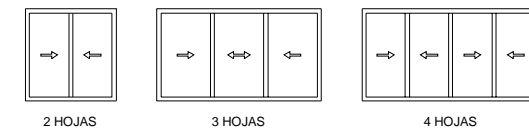
AIRE	3
AGUA	8A
VIENTO	C5
TÉRMICA	U _w = 2,6 W / m ²
ACÚSTICA	R _w = 31 (-1;-3) dBA

Transmitancia Térmica calculada para carpintería de 5,51 m² con vidrio bajo emisivo 4/16/4

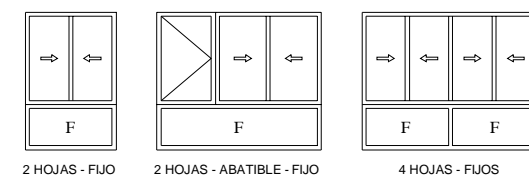
Atenuación Acústica calculada para carpintería con una superficie inferior a 3,10 m²

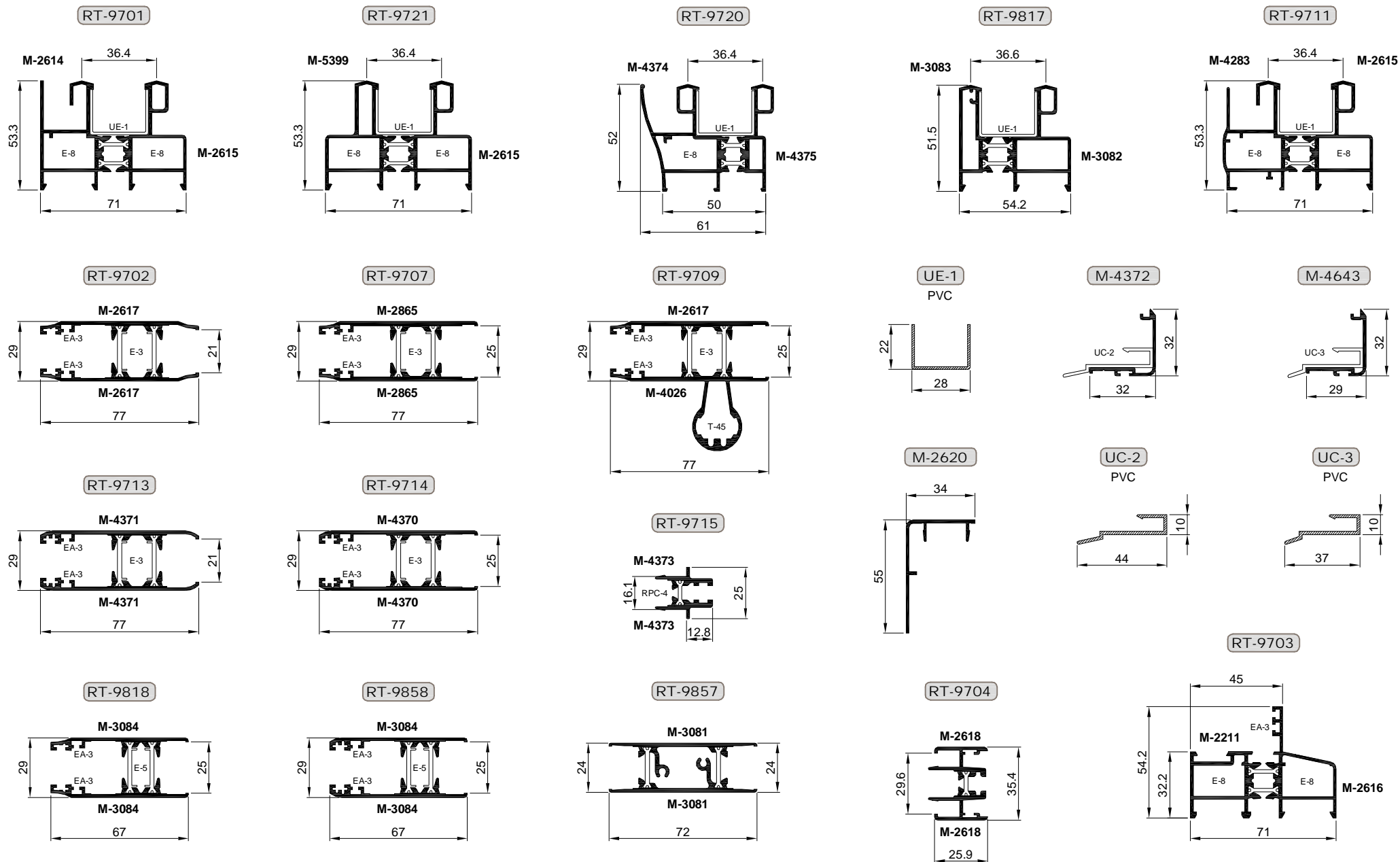
Aperturas

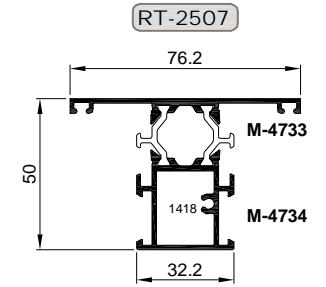
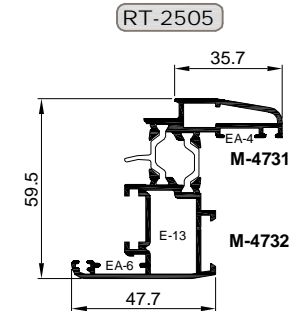
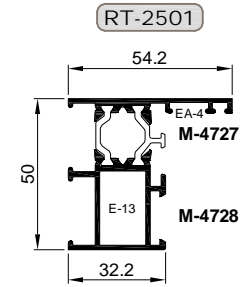
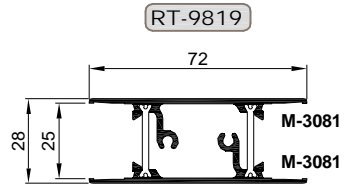
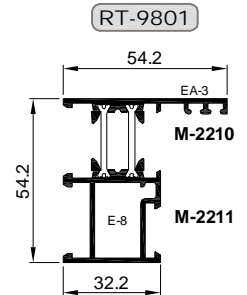
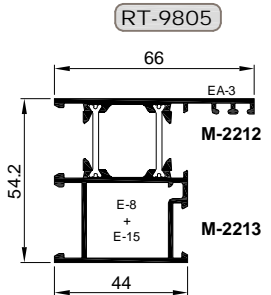
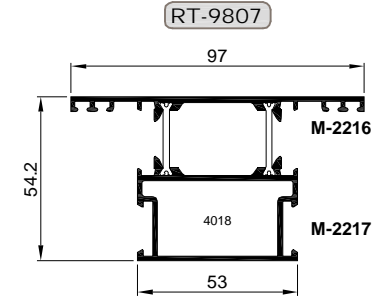
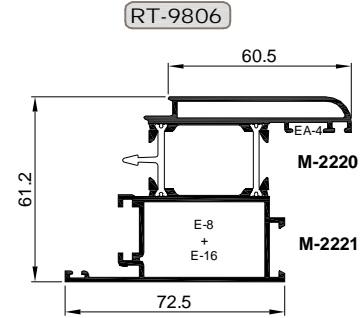
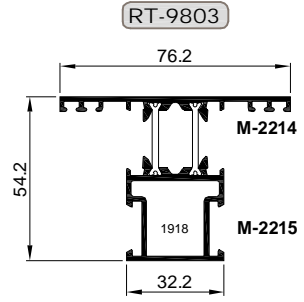
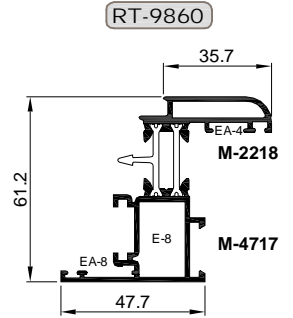
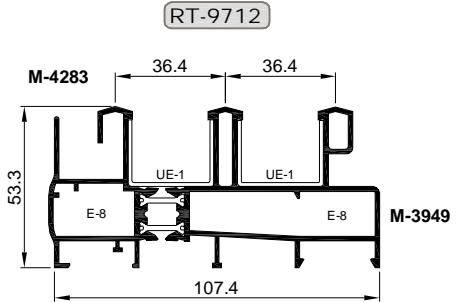
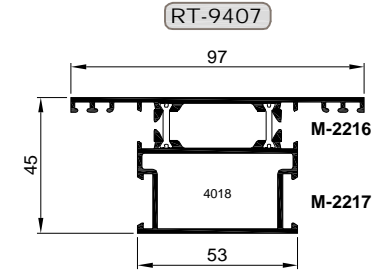
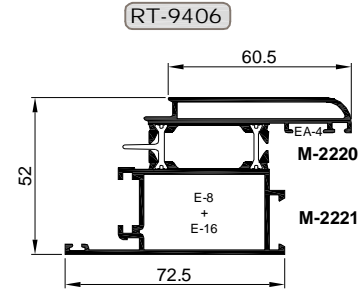
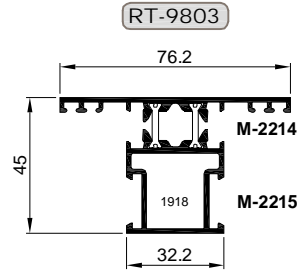
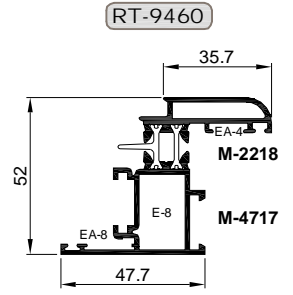
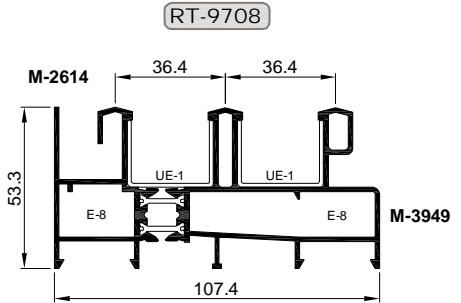
Ventanas y Puertas Balconeras

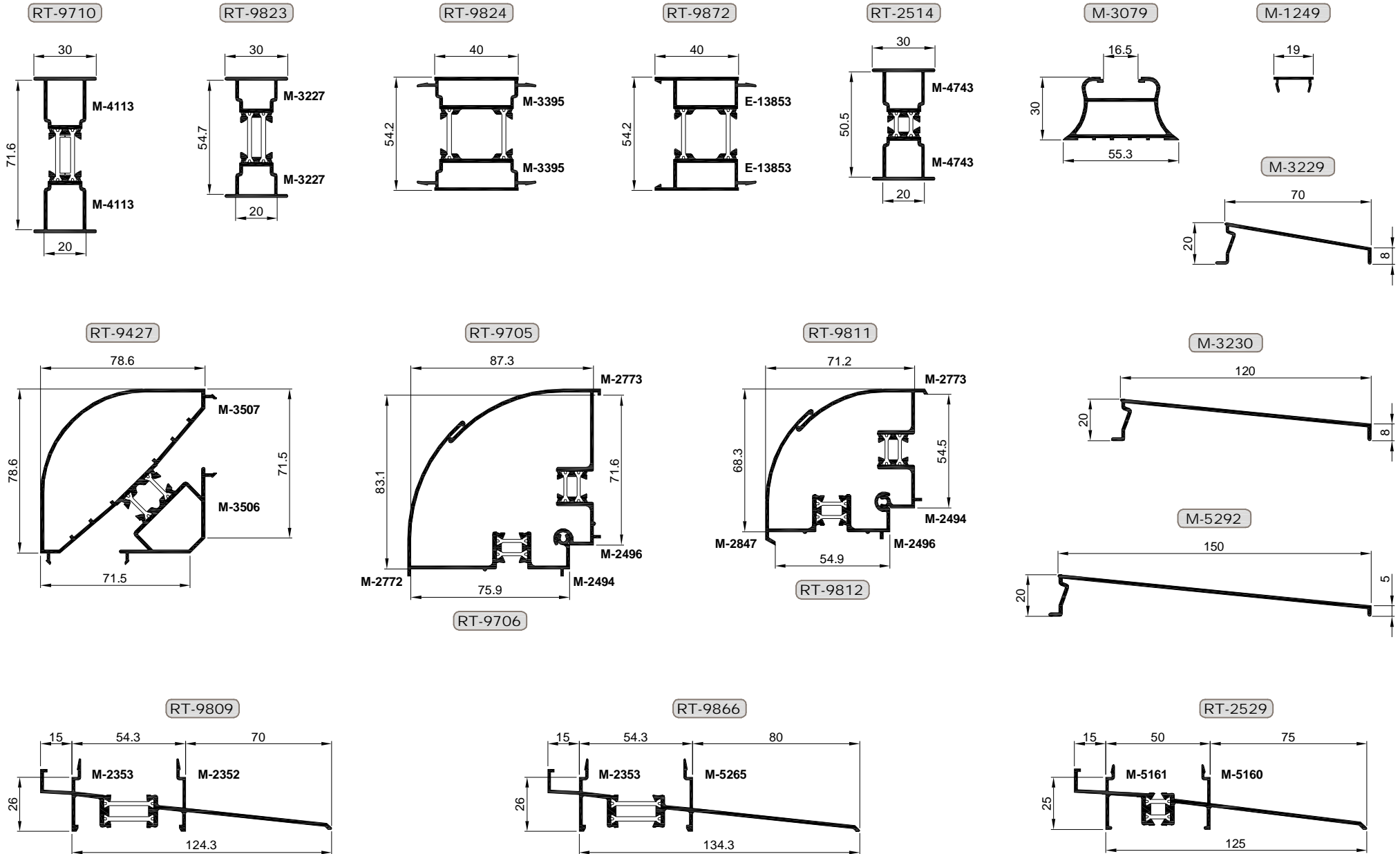


Otras Combinaciones



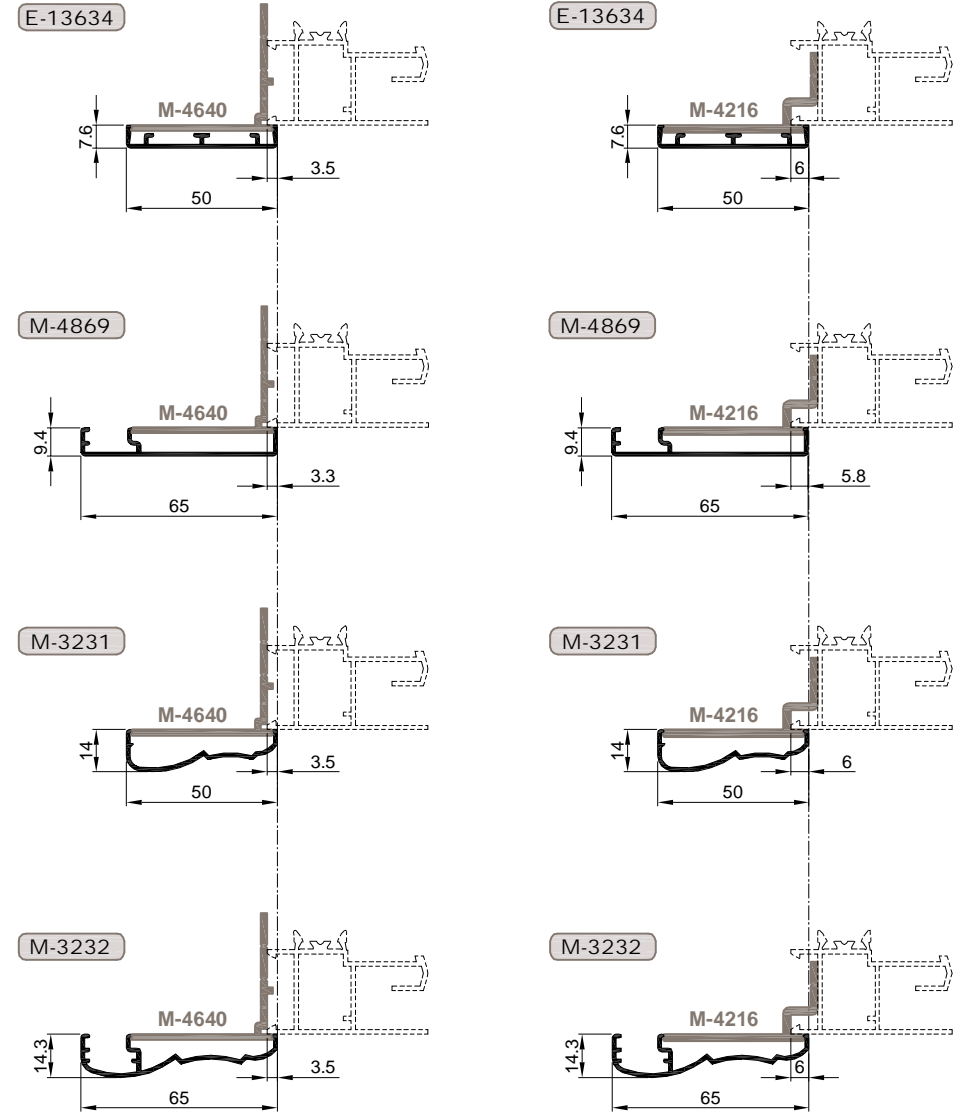
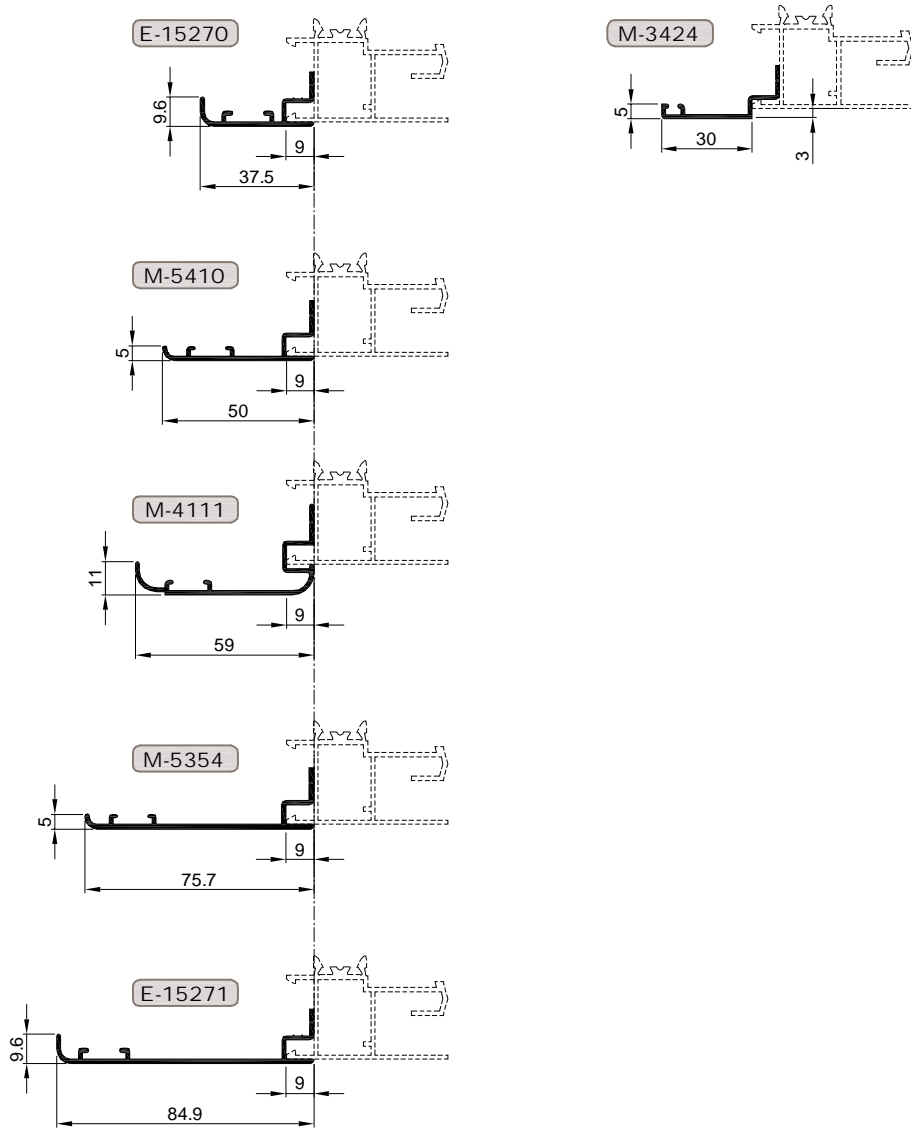


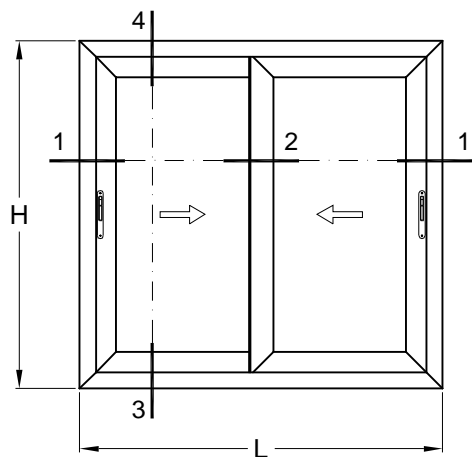
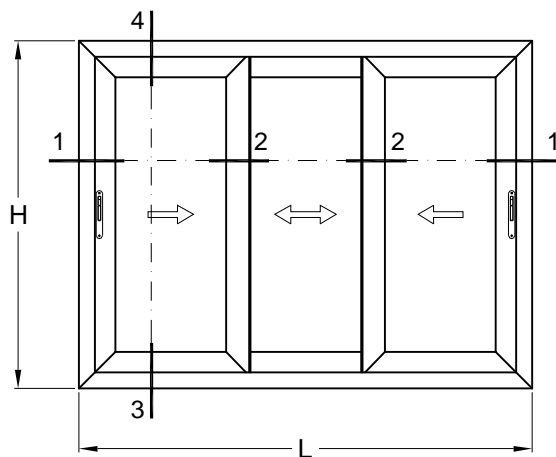
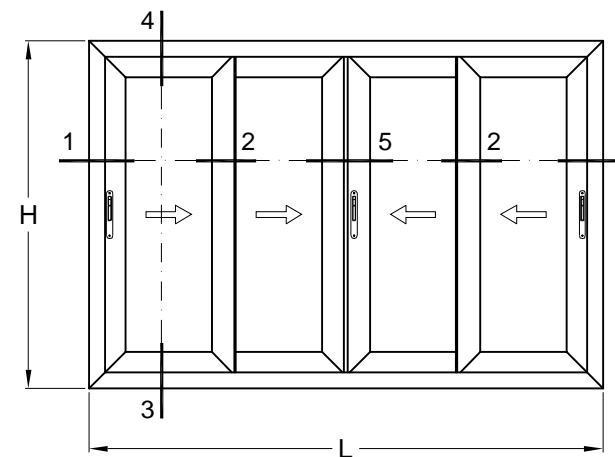



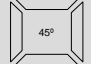

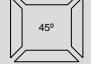
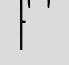
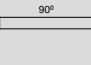
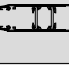
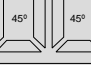

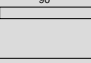
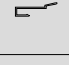
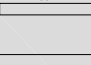



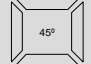

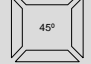
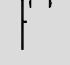
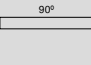
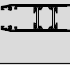


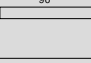
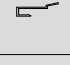
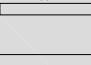
CON TORNILLO


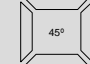

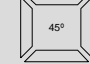
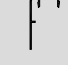
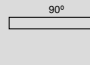
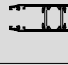
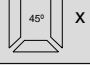

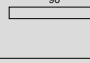
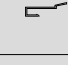
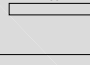
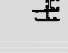
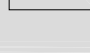
CON GRAPA



CORREDERA DE 2 HOJAS

CORREDERA DE 3 HOJAS

CORREDERA DE 4 HOJAS


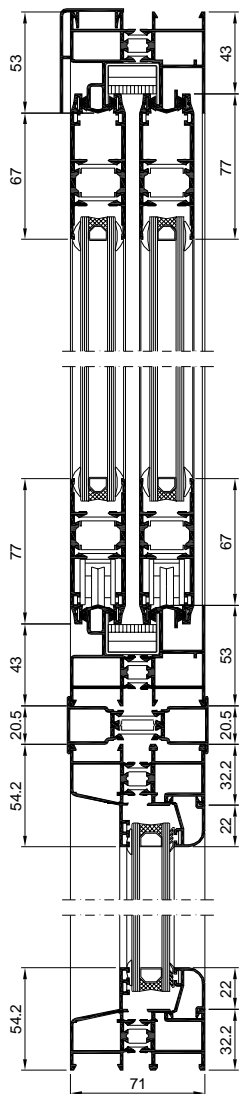
PERFIL	Refª. / DENOMINACION	Uds. / Corte				
	RT-9701 MARCO PERIMETRAL	2	L	2	H	
	UE-1 " U " MARCO PVC	2	Cortar colocado en marco		2	
	M-2620 VIERTEAGUAS	1	L			
	RT-9707 HOJA PERIMETRAL	4	L / 2 - 6	4	H - 87	
	M-4372 CRUCE HOJAS	2	H - 87 Con Mecanizado	2	H - 195 Con Tapa	
	UC-2 GATILLO PVC	2	H - 87 Con Mecanizado	2	H - 195 Con Tapa	

PERFIL	Refª. / DENOMINACION	Uds. / Corte				
	RT-9701 MARCO PERIMETRAL	2	L	2	H	
	UE-1 " U " MARCO PVC	2	Cortar colocado en marco		2	
	M-2620 VIERTEAGUAS	1	L			
	RT-9707 HOJA PERIMETRAL	6	L / 3 - 21	6	H - 87	 x 3
	M-4372 CRUCE HOJAS	4	H - 87 Con Mecanizado	4	H - 195 Con Tapa	
	UC-2 GATILLO PVC	4	H - 87 Con Mecanizado	4	H - 195 Con Tapa	

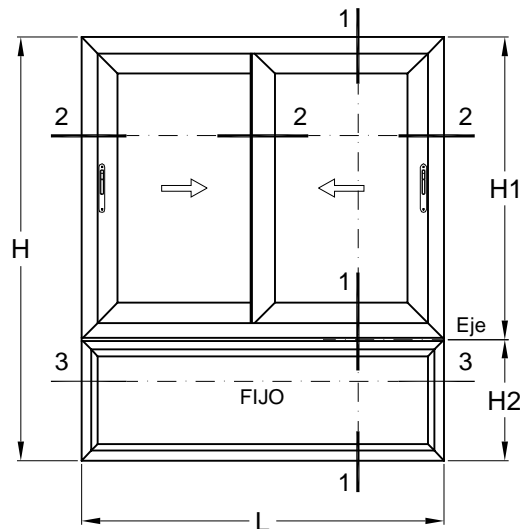
PERFIL	Refª. / DENOMINACION	Uds. / Corte				
	RT-9701 MARCO PERIMETRAL	2	L	2	H	
	UE-1 " U " MARCO PVC	2	Cortar colocado en marco		2	
	M-2620 VIERTEAGUAS	1	L			
	RT-9707 HOJA PERIMETRAL	8	L / 4 + 15	8	H - 87	 x 4
	M-4372 CRUCE HOJAS	4	H - 87 Con Mecanizado	4	H - 195 Con Tapa	
	UC-2 GATILLO PVC	4	H - 87 Con Mecanizado	4	H - 195 Con Tapa	
	RT-9704 CIERRE CENTRAL	1	H - 86			

- Las medidas indicadas son orientativas. Rogamos verifiquen las mismas antes de cortar material en serie para evitar posibles errores.

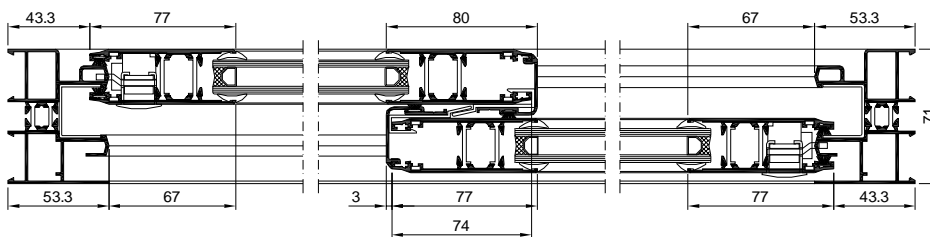
Sección 1 - 1



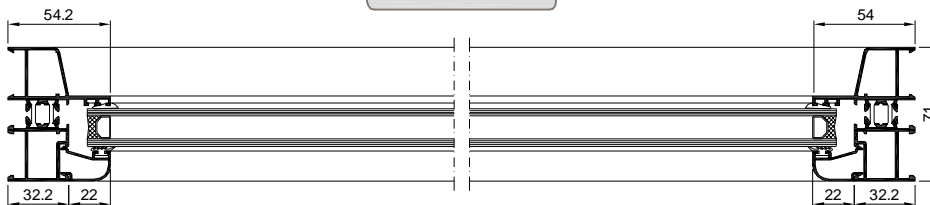
**CORREDERA DE 2 HOJAS
Y FIJO INFERIOR**



Sección 2 - 2

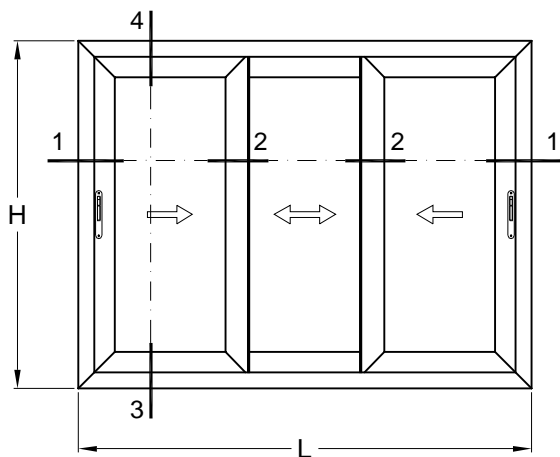
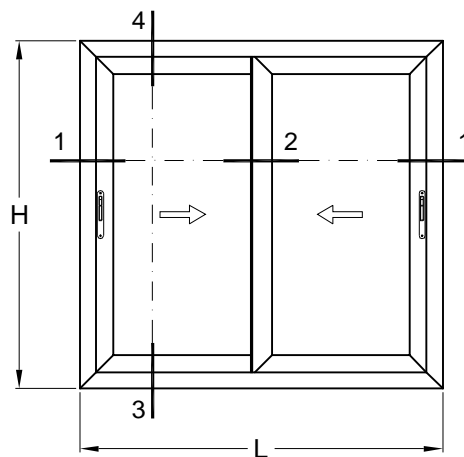
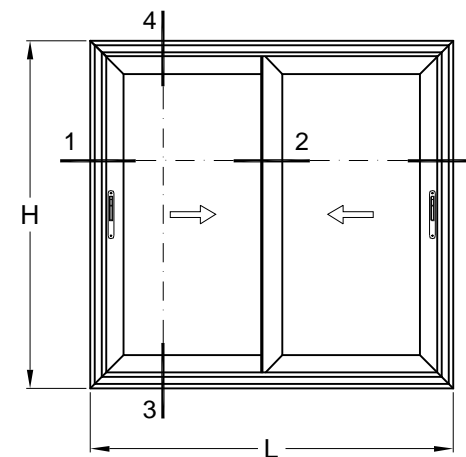



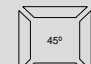

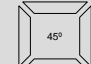
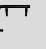
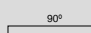

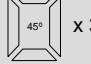
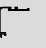
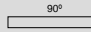
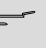
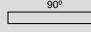
Sección 3 - 3

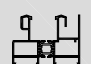
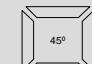

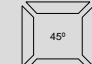

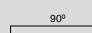

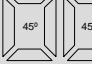

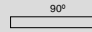

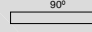



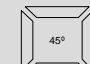

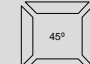

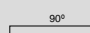

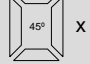
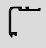
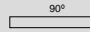
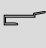
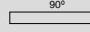


- Las medidas indicadas son orientativas. Rogamos verifiquen las mismas antes de cortar material en serie para evitar posibles errores.

PERFIL	Refª. / DENOMINACION		Uds. / Corte		
	RT-9701	MARCO PERIMETRAL	2 2	L H1 - 11	
	UE-1 PVC	"U" MARCO	2 2	Cortar colocado en marco	
	M-2620	VIERTEAGUAS	1	L	
	RT-9707	HOJA PERIMETRAL	4 4	L / 2 - 6 H1 - 97	
	M-4372	CRUCE HOJAS	2	H1 - 87 Con Mecanizado H1 - 195 Con Tapa	
	UC-2 PVC	GATILLO	2	H1 - 87 Con Mecanizado H1 - 195 Con Tapa	
	RT-9710	UNION MARCOS	1	L	
	RT-97.3	MARCO FIJO	2 2	L H2 - 11	
	Ver Tabla	JUNQUILLOS	2 2	L - 65 H2 - 75	

CORREDERA DE 3 HOJAS - 3 CARRILES

**CORREDERA DE 2 HOJAS
Marco 71 / Hoja 67**

**CORREDERA DE 2 HOJAS
Marco 50 / Hoja 67**


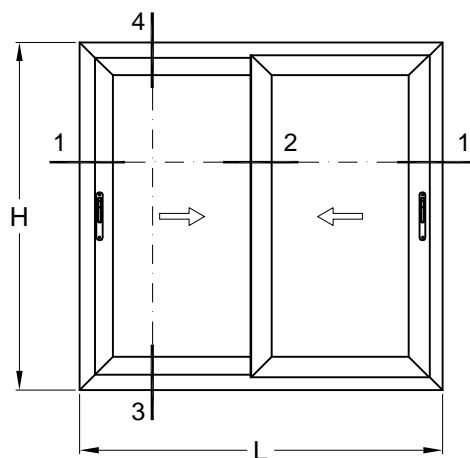
PERFIL	Refª. / DENOMINACION	Uds. / Corte		
	RT-9708 MARCO PERIMETRAL	2 2	L H	
	UE-1 "U" MARCO PVC	2 2	Cortar colocado en marco	
	M-2620 VIERTEAGUAS	1	L	
	RT-9707 HOJA PERIMETRAL	6 6	L / 3 + 21 H - 87	 x 3
	M-4372 CRUCE HOJAS	4	H - 87 Con Mecanizado H - 195 Con Tapa	
	UC-2 GATILLO PVC	4	H - 87 Con Mecanizado H - 195 Con Tapa	

PERFIL	Refª. / DENOMINACION	Uds. / Corte		
	RT-9701 MARCO PERIMETRAL	2 2	L H	
	UE-1 "U" MARCO PVC	2 2	Cortar colocado en marco	
	M-2620 VIERTEAGUAS	1	L	
	RT-9858 HOJA PERIMETRAL	4 4	L / 2 - 12 H - 87	 x 4
	M-4643 CRUCE HOJAS	2	H - 87 Con Mecanizado H - 195 Con Tapa	
	UC-3 GATILLO PVC	2	H - 87 Con Mecanizado H - 195 Con Tapa	

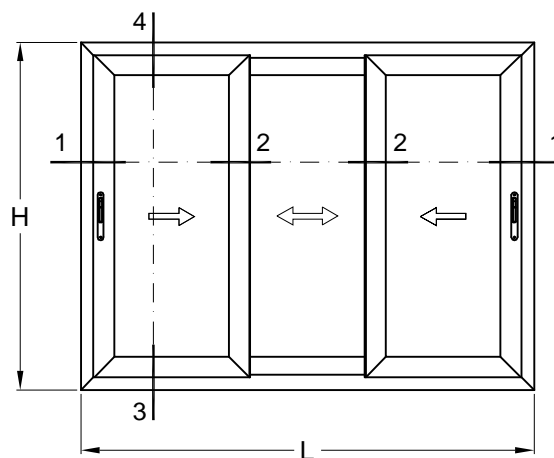
PERFIL	Refª. / DENOMINACION	Uds. / Corte		
	RT-9817 MARCO PERIMETRAL	2 2	L H	
	UE-1 "U" MARCO PVC	2 2	Cortar colocado en marco	
	M-2620 VIERTEAGUAS	1	L	
	RT-9858 HOJA PERIMETRAL	8 8	L / 4 - 10 H - 85	 x 4
	M-4372 CRUCE HOJAS	4	H - 85 Con Mecanizado H - 193 Con Tapa	
	UC-2 GATILLO PVC	4	H - 85 Con Mecanizado H - 193 Con Tapa	
	RT-9704 CIERRE CENTRAL	1	H - 85	

- Las medidas indicadas son orientativas. Rogamos verifiquen las mismas antes de cortar material en serie para evitar posibles errores.

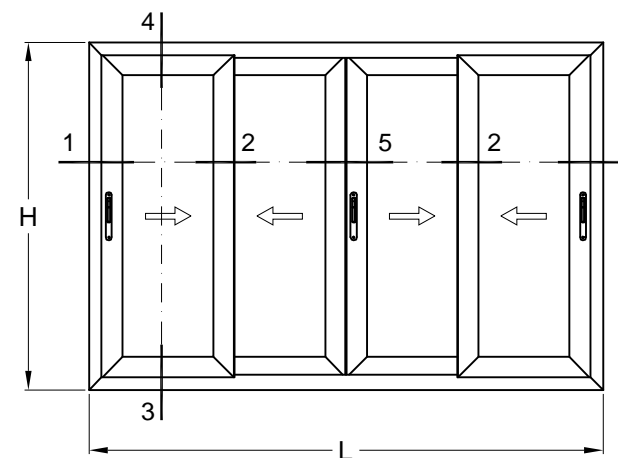
CORREDERA DE 2 HOJAS
Marco 54,2 / Hoja 67


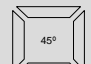

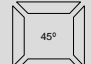

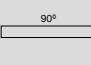

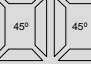
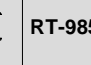

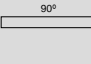

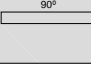





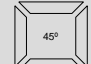

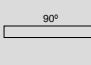

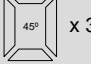
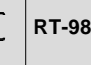
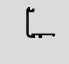
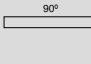

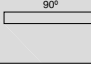
CORREDERA DE 3 HOJAS
Marco 54,2 / Hoja 67

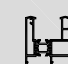
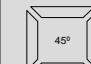

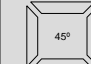

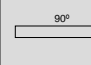
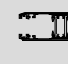

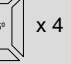
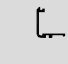
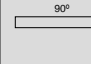
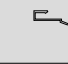
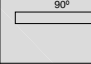
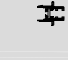
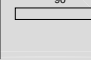


CORREDERA DE 4 HOJAS
Marco 54,2 / Hoja 67



PERFIL	Refª. / DENOMINACION	Uds. / Corte		
	RT-9817 MARCO PERIMETRAL	2	L	
		2	H	
	UE-1 " U " MARCO PVC	2	Cortar colocado en marco	
		2		
	M-2620 VIERTEAGUAS	1	L	
	RT-9858 HOJA PERIMETRAL	4	L / 2 - 10	
		4	H - 84	
	M-4643 CRUCE HOJAS	2	H - 84 Con Mecanizado	
			H - 192 Con Tapa	
	UC-3 GATILLO PVC	2	H - 84 Con Mecanizado	
			H - 192 Con Tapa	

PERFIL	Refª. / DENOMINACION	Uds. / Corte		
	RT-9817 MARCO PERIMETRAL	2	L	
		2	H	
	UE-1 " U " MARCO PVC	2	Cortar colocado en marco	
		2		
	M-2620 VIERTEAGUAS	1	L	
	RT-9858 HOJA PERIMETRAL	6	L / 3 + 15	
		6	H - 84	
	M-4643 CRUCE HOJAS	4	H - 84 Con Mecanizado	
			H - 192 Con Tapa	
	UC-3 GATILLO PVC	4	H - 84 Con Mecanizado	
			H - 192 Con Tapa	

PERFIL	Refª. / DENOMINACION	Uds. / Corte		
	RT-9817 MARCO PERIMETRAL	2	L	
		2	H	
	UE-1 " U " MARCO PVC	2	Cortar colocado en marco	
		2		
	M-2620 VIERTEAGUAS	1	L	
	RT-9858 HOJA PERIMETRAL	8	L / 4 + 10	
		8	H - 84	
	M-4643 CRUCE HOJAS	4	H - 84 Con Mecanizado	
			H - 192 Con Tapa	
	UC-3 GATILLO PVC	4	H - 84 Con Mecanizado	
			H - 192 Con Tapa	
	RT-9715 CIERRE CENTRAL	1	H - 164	

- Las medidas indicadas son orientativas. Rogamos verifiquen las mismas antes de cortar material en serie para evitar posibles errores.

EN PREPARACION

c/ Cormoranes, 18 Poligono Industrial La Estación
28320 - Pinto (MADRID)
Telf: 91 691 54 11 / Fax: 91 691 58 79
E-mail: extrusion.spain@sapagroup.com

SAPA y SISTEMAS EXPRAL como marca de SAPAGROUP no se hacen responsables del mal uso que se realice de los contenidos de este catalogo, siendo exclusiva responsabilidad de la persona/as que accede a ellos o los utiliza.

Tampoco asumimos ninguna responsabilidad de los errores tipográficos que puedan aparecer en este catálogo y nos reservamos el derecho de cambiar o modificar sin previo aviso su contenido cuando sea necesario.